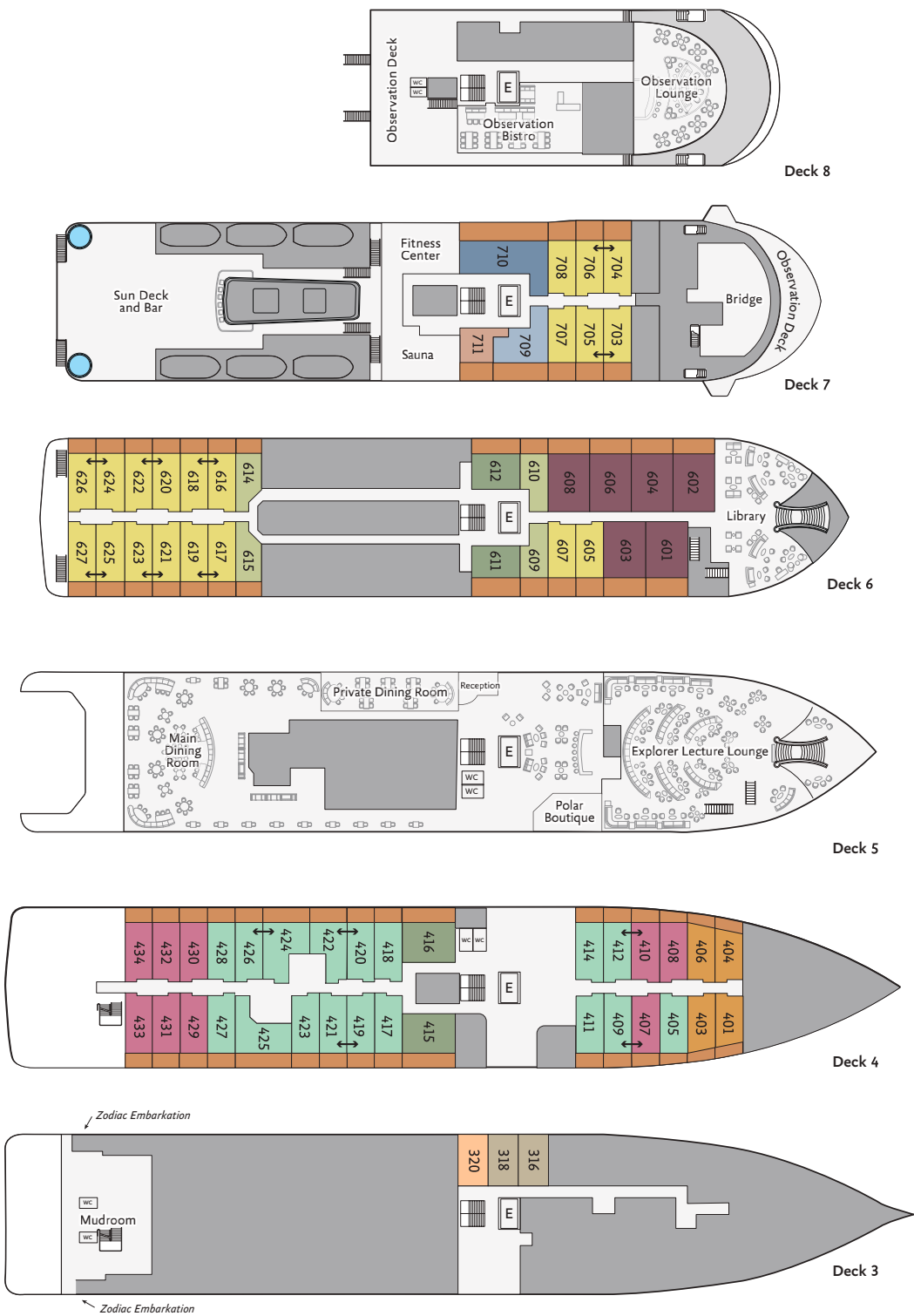


Ocean Explorer

 Quark
Expeditions®
The Leader in Polar Adventures



PLEASE DO NOT REMOVE FROM CABIN



- Owner's Suite
 - Explorer Suite
 - Studio Veranda Single
 - Junior Suite
 - Royal Veranda Stateroom
 - Grand Veranda Stateroom
 - Deluxe Veranda
 - Deluxe Veranda Middle
 - Deluxe Veranda Foward
 - Studio Veranda Stateroom
 - Studio Double
 - Studio Single
 - Interconnecting Suites
 - Balcony
- Accessibility modified cabin; please speak to your travel professional for details

Welcome Aboard

Going beyond in the Polar Regions requires the best expedition team operating the best ship. Guests sailing on *Ocean Explorer* most certainly have both.

Our passionate Expedition Team and crew are happy to have you aboard the state-of-the-art *Ocean Explorer* as we take you to remote destinations others can't reach. Every day promises new adventures, after which you'll return to the comfort of your ship, your home base during your life-changing polar adventure.

ABOUT OCEAN EXPLORER

Ocean Explorer, the newest addition to our fleet, is modern, elegant and purpose-built for polar exploration. The 138-passenger vessel has been designed with the latest in expedition ship technology. One of the ship's key features is the ULSTEIN X-BOW®, a marine engineering innovation that ensures a comfortable and smooth sailing experience thanks to the inverted bow. With its distinctive X-Bow design and remarkable two-story forward lounge, *Ocean Explorer* sets a striking stage for your expedition of a lifetime.

Spacious cabins feature a modern, bespoke Scandinavian design, and almost all have verandas. You can relax and find comfort in the well-equipped gym, sauna with large windows, and two outdoor Jacuzzis.

Ocean Explorer has been designed with ample outdoor viewing areas and multi-height outer decks, which are ideal for long-view photography and wildlife viewing. The vessel is equipped with a fleet of 15 Zodiacs that enable guests to get off the ship quickly and safely for off-ship adventures. In addition to the well-appointed and spacious public areas, *Ocean Explorer* has an industry-leading mix of sustainability systems, including fuel-efficient Rolls Royce engines.



- SHIP SPECIFICATIONS**
- Staff & Crew: 105
 - Guests: 138
 - Length: 342 feet (104.4 meters)
 - Breadth: 60.3 feet (18.4 meters)
 - Draft: 17.3 feet (5.3 meters)
 - Propulsion: 4 x Wartsila, 58,000 horsepower
 - Ice Class: 1A, PC6
 - Cruising speed: 16.5 knots, in open water
 - Registered: Portugal
 - Lifeboats: 2
 - Zodiac: 15

Suite Configurations

- STUDIO SINGLE - DESIGNED FOR ONE:** These cabins are located on Deck 3 and approximately 177 sq. ft. (16.5 sq. m.) in size, with one double bed and a porthole view. There is also a desk and chair, TV, state of the art ‘infotainment’ system and private bathroom with shower, vanity and heated floor.



- STUDIO DOUBLE:** Enjoy the calm ambience of this stateroom which features a porthole window and every amenity essential for your polar voyage.



- STUDIO VERANDA STATEROOM:** Located on Deck 6 and approximately 173 sq. f. (16.1 sq. m.) in size, these cabins have one double bed that can be configured into two singles. There is a floor to ceiling glass view that opens to a walkout balcony. There is also a desk and chair, TV, state of the art ‘infotainment’ system and private bathroom with shower, vanity and heated floor.



- DELUXE VERANDA FORWARD:** Enjoy privacy and elegance at the front of the ship where guests are treated to sweeping views from their private veranda.



- DELUXE VERANDA MIDDLE:** These classic staterooms ensure guests have easy access to all amenities the ship has to offer.



- DELUXE VERANDA:** Revel in superior comfort of this stateroom, which has the quickest access to the Deck 4 stern viewing area. You can also take in the panoramic ocean views from your private veranda. All Deluxe Veranda staterooms are furnished with sofas.



- GRAND VERANDA STATEROOM:** Located near the center of the ship on Deck 6, this stateroom offers easy access to the lounge, dining room and a private veranda.



- ROYAL VERANDA STATEROOM:** This spacious, classic stateroom allows you to stretch freely. Centrally located on Decks 4 and 6.



- JUNIOR SUITE:** The decor and layout of this stately suite will amaze. The private veranda, convenient Deck 6 location, plus proximity to the lounge and downstairs dining room are equally impressive.



- STUDIO VERANDA SINGLE:** Designed for one. This unique cabin is located on Deck 7 and approximately 162 sq. f. (15.1 sq. m.). It has one twin bed with a floor to ceiling glass view that opens to a generous walkout balcony. There is also TV, state of the art ‘infotainment’ system and private bathroom with shower, vanity and heated floor.



- EXPLORER SUITE:** This unique 2-room suite is located on Deck 7 and is approximately 269 sq. f (25.0 sq. m.) in size. It has one double bed that can be configured into two singles in the inner bedroom and the outer sitting area is furnished with a sofa-bed. Walk-out from either room to a double sized balcony. There are also 2 TV’s, state of the art ‘infotainment’ system and private bathroom with shower, vanity and heated floor. And an additional powder room in the outside sitting area.



- OWNER’S SUITE:** This palatial, airy apartment offers stunning views from its large private veranda on the highest cabin level. The luxurious suite features a large master bedroom, living room and dining area and two large master bathrooms, among other amenities.



** Please note that balcony doors may be locked during sea days or during inclement weather as a safety precaution.*

All cabin images are artist’s renderings.

Cabin Amenities

Ocean Explorer's 138 guests are accommodated in 70 cabins, two of which are solo suites. Guests have a choice of 12 types of spacious and luxurious cabins that ensure a quiet ambience with no sound disturbance from adjoining cabins. Almost all cabins feature a balcony for outdoor viewing.



	Studio Single	Studio Double	Deluxe Veranda Fwd	Deluxe Veranda Mid	Deluxe Veranda	Studio Veranda Stateroom	Grand Veranda Stateroom	Junior Suite	Royal Veranda Stateroom	Studio Veranda Single	Explorer Suite	Owner's Suite
Number of Cabins available	1	2	4	17	9	4	20	6	4	1	1	1
Capacity	1	4	8	34	18	8	40	12	8	1	2	2
Cabin Size	177ft² (16.5m²)	181 ft² (16.8m²)	182 ft² (16.9m²)	206 ft²(19.1m²)	204 ft²(18.9m²)	173 ft²(16.1m²)	202 ft²(18.8m²)	298 ft²(27.7m²)	230 ft² (21.3m²)	162 ft² (15.1m²)	269 ft² (25m²)	443 ft² (41.2m²)
CABIN FEATURES												
Climate control	✓	✓	✓	✓	✓	✓	✓	✓	✓	✓	✓	✓
Fridge	✓	✓	✓	✓	✓	✓	✓	✓	✓	✓	✓	✓
In-cabin safe	✓	✓	✓	✓	✓	✓	✓	✓	✓	✓	✓	✓
Heated bathroom floors	✓	✓	✓	✓	✓	✓	✓	✓	✓	✓	✓	✓
Separating beds	✓	✓	✓	✓	✓	✓	✓	✓	✓	✓	✓	✓
Sofa bed	-	-	-	Some	Some	✓	✓	✓	✓	-	✓	✓
Dedicated living area	-	-	-	-	-	-	-	✓	-	-	✓	✓
Powder room	-	-	-	-	-	-	-	-	-	-	✓	✓
Private bedroom	-	-	-	-	-	-	-	✓	-	-	✓	✓
Bathtub	-	-	-	-	-	-	-	-	-	-	✓	✓
Desk and Chair	✓	✓	✓	✓	✓	✓	✓	✓	✓	✓	✓	✓
EXTERIOR VIEWS												
Port-hole window	✓	✓	-	-	-	-	-	-	-	-	-	-
Floor to ceiling windows	-	-	✓	✓	✓	✓	✓	✓	✓	✓	✓	✓
Walk out balcony	-	-	✓	✓	✓	✓	✓	✓	✓	✓	✓	✓
ENTERTAINMENT / TECHNOLOGY												
USB charging station	✓	✓	✓	✓	✓	✓	✓	✓	✓	✓	✓	✓
TV	✓	✓	✓	✓	✓	✓	✓	Two TV's	✓	✓	Two TV's	Two TV's
Wifi package	✓	✓	✓	✓	✓	✓	✓	✓	✓	✓	✓	✓
OCCUPANCY OPTIONS												
Interconnecting cabins	-	-	-	Some	Some	-	Some	-	-	-	-	-
Solo Request Share Cabins	-	-	✓	✓	✓	✓	-	-	-	-	-	-



	Studio Single	Studio Double	Deluxe Veranda Fwd	Deluxe Veranda Mid	Deluxe Veranda	Studio Veranda Stateroom	Grand Veranda Stateroom	Junior Suite	Royal Veranda Stateroom	Studio Veranda Single	Explorer Suite	Owner's Suite
Number of Cabins available	1	2	4		9	4	20	6	4	1	1	1
Capacity	1	4	8		18	8	40	12	8	1	2	2
Cabin Size	177ft² (16.5m²)	181 ft² (16.8m²)	182 ft² (16.9m²)	206 ft²(19.1m²)	204 ft²(18.9m²)	173 ft²(16.1m²)	202 ft²(18.8m²)	298 ft²(27.7m²)	230 ft² (21.3m²)	162 ft² (15.1m²)	269 ft² (25m²)	443 ft² (41.2m²)
AMENITIES												
Quark Expeditions parka	✓	✓	✓	✓	✓	✓	✓	✓	✓	✓	✓	✓
Reusable water bottle	✓	✓	✓	✓	✓	✓	✓	✓	✓	✓	✓	✓
Muck Boots, on loan for duration of voyage	✓	✓	✓	✓	✓	✓	✓	✓	✓	✓	✓	✓
Dedicated locker in Ready Room	✓	✓	✓	✓	✓	✓	✓	✓	✓	✓	✓	✓
Shampoo, conditioner and shower gel	✓	✓	✓	✓	✓	✓	✓	✓	✓	✓	✓	✓
Bathrobes and slippers	✓	✓	✓	✓	✓	✓	✓	✓	✓	✓	✓	✓
Hair dryer	✓	✓	✓	✓	✓	✓	✓	✓	✓	✓	✓	✓
SERVICES												
Access to fitness facilities	✓	✓	✓	✓	✓	✓	✓	✓	✓	✓	✓	✓
Laundry service (for a fee)	✓	✓	✓	✓	✓	✓	✓	✓	✓	✓	✓	✓
Laundry service (free of charge)	-	-	-	-	-	-	-	✓	✓	✓	✓	✓
In cabin dining	-	-	-	-	-	-	-	✓	-	-	✓	✓
Light menu bistro service available in between meals	✓	✓	✓	✓	✓	✓	✓	✓	✓	✓	✓	✓

Cabin Information

SHOWERS AND TOILETS

Each cabin has a private bathroom with shower and heated floors, toilet and wash basin. Shampoo, conditioner and shower gel are provided for your use.

ELECTRIC CURRENT

The electrical supply on board is 220 V (European). Guests from Canada and the United States will require an adapter. The outlets are located near the television, in the desk, and there are USB-A ports in the night lights. The bathroom outlets are suitable for shavers only.

(Before you purchase a converter, ensure your electronics, cameras, computers and devices are compatible with 220 V.)

Please be aware that the electricity supply may not be sufficient to power your electronic devices at all times. It is recommended that you check the voltage of your device before plugging it in, as the device may be damaged if the incoming voltage is higher than that for which it is manufactured. Please see www.quarkexpeditions.com/en/terms-and-conditions for more information.

HAIRDRYERS

There is a hair dryer included in each cabin.

BATHROBES

The bathrobes in your cabins are on loan for you to enjoy for the duration of your expedition.

VALUABLES

Please store your valuables in the safe in your cabin. We recommend you travel with as few valuables as possible.

LAUNDRY

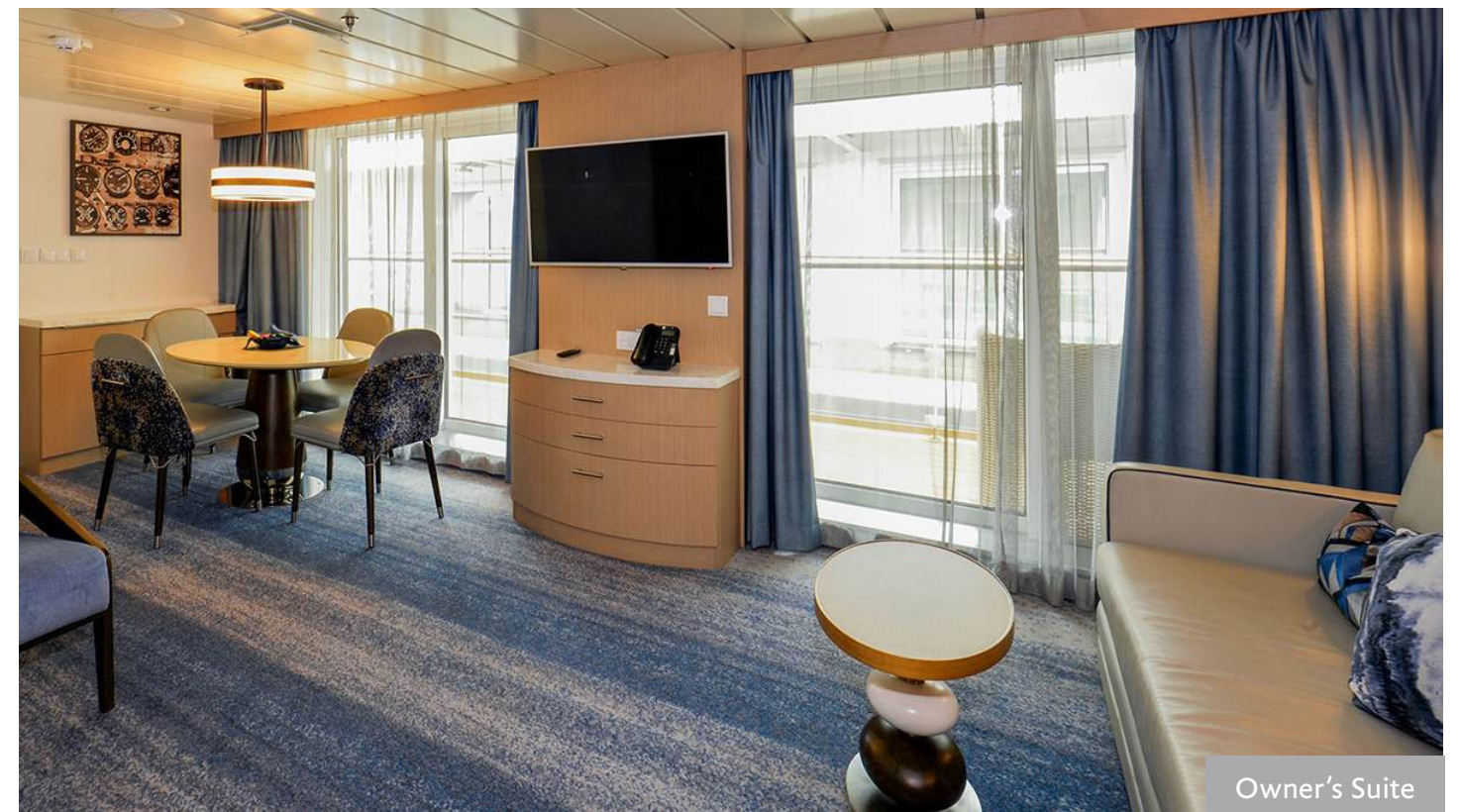
A complete list of laundry fees will be provided on board. Laundry is collected each morning; please allow 48 hours for your laundry to be returned. Ironing services are also available at a minimal charge. We encourage you to take advantage of the laundry services, as it will mean you can pack fewer articles of clothing. If you prefer to hand wash small items in your cabin, please remember to bring environmentally friendly detergent.



Studio Single



Grand Veranda Stateroom



Owner's Suite

On Board Procedures

WATER

All passengers receive an eco-friendly, reusable water bottle in their cabin upon arrival. There are water filling stations throughout the ship.

ONBOARD ACCOUNTS

To make things as stress-free as possible, items you purchase from the Polar Boutique, lounge or specialty drinks not included in our complimentary beer and alcohol offering are charged to your ship account. Cabin charges can also include spa, laundry, postage, any communication charges beyond our complimentary Wi-Fi service (see chart on opposite page), and adventure options booked on board (space permitting). Payments of shipboard accounts are made towards the end of the expedition, at the reception area. The US dollar is the standard currency on board. You can use cash, Visa, MasterCard or American Express credit cards to pay your shipboard account. Personal checks are not accepted.

Note: If you are sharing a cabin and would like separate accounts, you must advise reception.

GRATUITIES

We understand this is a very personal subject and whatever amount you give is at your own discretion. At the end of the voyage you will have the option to charge a gratuity amount to your onboard account, or to place cash in an envelope. Gratuities are shared among our hotel and expedition team members.

BRIDGE VISITS

During your voyage you may be given access to the Bridge, where you can observe how the Captain and officers sail and navigate the ship. However, the Captain and Bridge officers

do restrict access during arrivals and departures from port and during times of complicated navigation. As the Bridge is an important working area on the ship, we ask that you keep noise to a minimum to avoid distracting the officers from conducting their jobs efficiently. Understandably, Bridge etiquette includes a ‘no eating, drinking or smoking’ policy.

DOCTOR

Quark Expeditions provides an English-speaking doctor on board who manages a medical clinic stocked with a supply of common prescription medicines and basic first aid equipment. If you are under regular treatment for any ailment, you must bring a sufficient supply of medicine. We recommend that you pack an extra two weeks’ supply of medication in case of emergency. We cannot accept responsibility for not having a specific brand or type of drug on board. Should you fall ill, the doctor will refer to the medical forms that you completed and returned to us; therefore it is vital that the information you provide is complete and accurate.

MAIL *(Only available on Antarctic Expeditions)*

Sending polar mail is still a rare and memorable way for loved ones to receive a memento from your voyage. Mail may be posted from the ship and will be charged to your on board account. Please deposit your mail at reception with your cabin number and name noted clearly in the upper right-hand corner of each card or letter.

If your voyage visits a research base, we may be permitted to leave mail. If we are unable to post the mail during your voyage, staff will attempt to do so on subsequent voyages. Please note, delivery can take many months and cannot be guaranteed.

STAYING IN TOUCH WHILE ON BOARD

When you are not busy exploring the natural beauty of the Polar Regions, you may wish to connect with family and friends back home to share some of your voyage highlights. Guests on Quark Expeditions can now enjoy free Wi-Fi as part of our “Raise a Glass and Stay Connected Free” program. This complementary Wi-Fi service permits basic Internet browsing and voice applications.

Please note that we travel to some of the most remote parts of the world. As we utilize satellite equipment for our connection, Wi-Fi signal may be intermittent.

To access email or internet on your personal computer, tablet or smart phone, connect to the network on your device, where you can access our complimentary plan, or purchase Priority Wi-Fi.

If you would like to make phone calls from the ship, Voice credits are also available for a small fee, and allow calling from your cabin to shore telephones at various rates per minute, dependent on location and type of phone you are dialing (calling mobile phones tend to be more expensive).

Current prices for these optional services will be posted on board your ship. Please note we cannot provide refunds for unused voice or pay per minute calls.

ONBOARD WEBSITE

Our free onboard Web site is an excellent resource for daily programs, expedition team biographies, and other voyage information. Visit MyQuarkVoyage.com during your expedition to take advantage of the materials. Access to this site is available free of charge, even if you have not purchased data. Contact Guest Services if you experience any difficulty logging on.*



Observation Lounge

* Wi-Fi terms and conditions apply.

Public Spaces

POLAR BOUTIQUE

If you forgot any essentials or need a little souvenir from your voyage, the Polar Boutique on Deck 5 is our onboard gift shop. Opening hours will vary based on the daily expedition activities.

Gifts and souvenirs are great to bring home as mementos of your polar expedition. In addition to small souvenirs, our Polar Boutique offers a selection of expedition gear, including base layer clothing, waterproof pants, gloves and more.

RECEPTION AREA

A crew member is available at reception to assist you or answer any questions during posted hours. You can arrange for a wake-up call or settle your accounts at the end of the voyage.

LIBRARY

Light-filled interior library on Deck 6 at the top of the gorgeous atrium staircase—at the bow of the ship—allows up to 47 guests to sit and relax indoors while taking in the surrounding polar landscapes through the floor-to-ceiling glass. The *Ocean Explorer* library collection includes books in multiple languages covering subjects such as wildlife, history, marine biology, ecology and geology.

LOUNGE AREAS

GUESTS HAVE TWO OPTIONS ON *OCEAN EXPLORER*.

The stylish Observation Lounge: at the top of the ship guarantees incredible views. Guests also frequent this spacious lookout on Deck 8 to enjoy cocktails and conversation with fellow travelers. Seats 63.

Latitude Bar is a popular social hub on Deck 5. The beautifully-lit bar—with its lush sofas and faux marble-topped end tables—is large enough to seat 46 and is ideal for enjoying a quiet drink on your own or hanging out with friends.

EXPLORER LECTURE LOUNGE

Located on Deck 5, the Explorer Lecture Lounge can seat every guest on the ship, and features the best in A/V equipment, including state-of-the-art systems for on-board presentations.

ELEVATOR

The onboard elevator system is available for travel between decks. However, for your safety this elevator will be shut down during any periods of inclement weather.

GYM

Located on Deck 5, gym hours are posted at the door, with facilities available on a first come, first served basis. Please refrain from bringing glass bottles into the gym. We kindly ask that you take care using these facilities and when you leave, please ensure the equipment is as clean and tidy as when you arrived. Bring comfortable clothing and footwear if you will be taking advantage of the facilities.

DRY SAUNA, SPA AND JACUZZIS

After a day of exciting off-ship adventures, guests can head to the Dry Sauna on Deck 7 to relax on traditional wood benches while gazing at the polar wilderness through the large sauna windows. Accommodates 15 people on Deck 7. Guests can also enjoy a massage and other services in the spa, also located on Deck 7. The spa has partnered with premium spa provider Voya, which offers a full range of seaweed products.

Two outdoor Jacuzzis on deck 7, at the ship’s stern, mean you can relax alfresco while soaking up the breath-taking polar views.

Bring your bathing suit so you can join us in the Polar Plunge, or to use in the sauna. You might also appreciate having some waterproof shoes. It is recommended to wear closed-toed shoes while moving around the ship, but as long as your water shoes have a heel strap and fit securely, they can be safely worn while using the wet facilities.

READY ROOMS

The Ready Rooms on Deck 3 offer a designated open storage locker for each cabin, where you can store and dry your gear between excursions. Benches are available to help you gear up for Zodiac embarkation.

OUTDOOR OBSERVATION DECKS

Observation areas on Decks 7 and 8 allow for higher, longer-view landscape photography while contending with less sea spray.

MEDICAL CLINIC

The Clinic is located on Deck 3. In case of emergency, the doctor is available 24 hours a day, and can be contacted through reception or any member of the Expedition Team.



Discovery Library



Jacuzzi



Observation Deck



Fitness Center

Dining Onboard

DINING

THE OBSERVATION BISTRO—with its marine blue and off-white colors—is your go-to spot for lighter fare and grab-and-go snacks. This relaxed eatery seats up to 44 guests, who can take in full views of their polar surroundings and wildlife while enjoying a light bite.

MAIN DINING ROOM: Contemporary meets cozy in this modern dining room with its stylish lighting and contemporary art. Located on Deck 5, the Main Dining Room seats 144 guests, and features expansive floor-to-ceiling windows that open onto the spectacular polar wilderness.

PRIVATE DINING ROOM: Tasteful and intimate. This stylish, private dining room on deck 5 provides a relaxed dining experience—with views of the polar landscape and wildlife—for up to 36 guests.

DIETARY REQUIREMENTS AND ALLERGIES

All guests—including vegetarians, meat-eaters, as well as those who follow a gluten-free diet—will be equally impressed with the dining options on our ships. Quark Expeditions® is able to cater to most special dietary requests, as long as you clearly indicate your needs on the required expedition forms when you book your voyage. Menus will be clearly labeled for vegetarian and gluten free options, but please do notify your server of the dietary restrictions you indicated on your form. We regret that kosher food cannot be prepared.

FOOD PREPARATION

Breakfasts and lunches are normally served buffet style, while dinners are served plated. À la carte meals are made at the time of your order, allowing our chefs to prepare each dish to your individual needs. Working in a small kitchen, our chefs are able to monitor and control the quality of food being served, ensuring you receive top quality meals during the course of your expedition.

SPECIAL EVENTS

You can arrange a special gathering, anniversary, birthday or other event in our Private Dining Room. Reserve at time of booking, or speak to the on-board Guest Services representative in advance.

DRESS CODE

The dress code on the ship is casual, though some may choose to dress up a little for the Captain’s Welcome Reception.



Main Dining Room

BAR AND WINE SERVICE

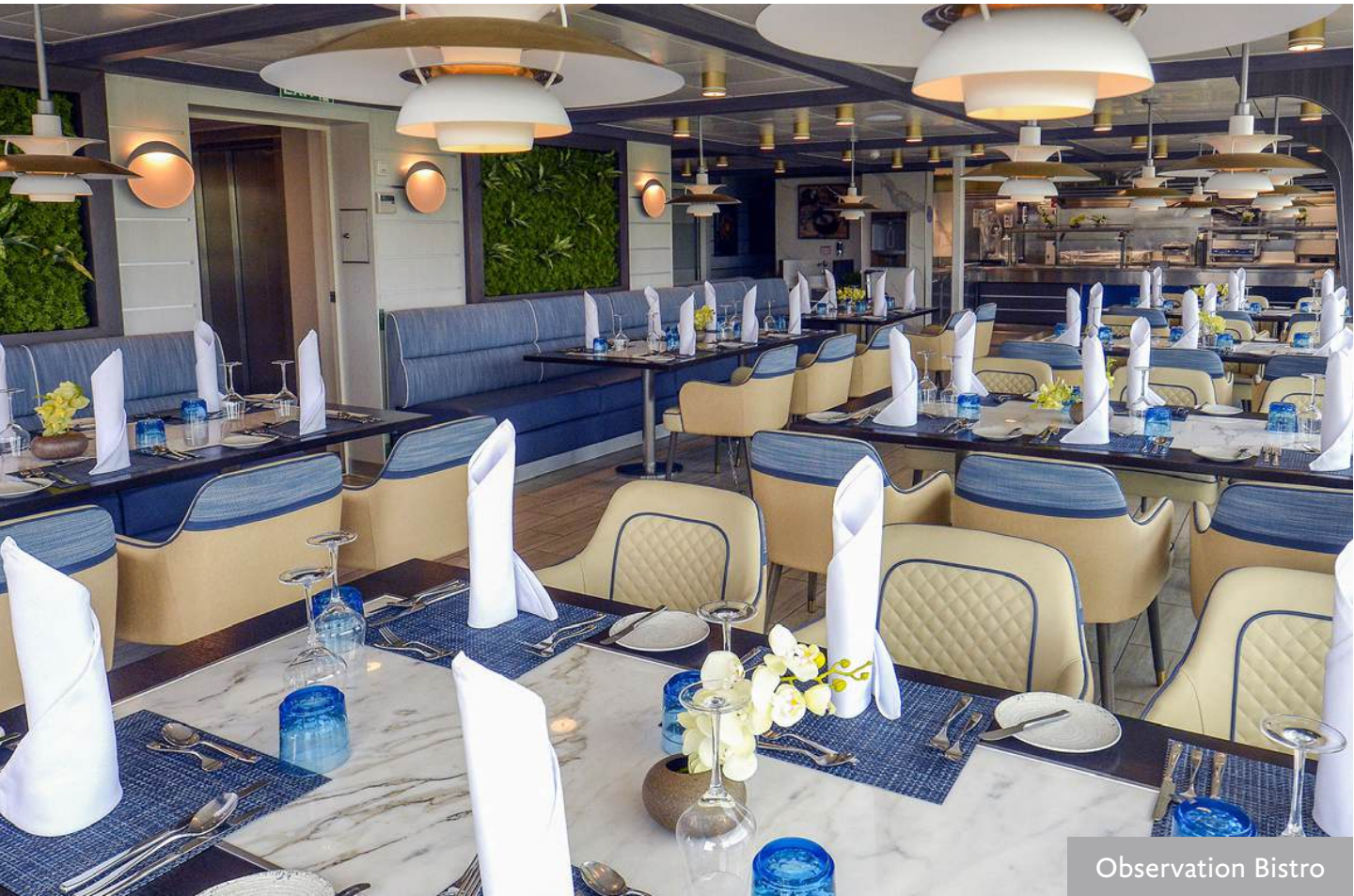
Guests on all Quark Expeditions voyages enjoy complimentary bar service as part of our “Raise a Glass and Stay Connected Free” program. Beer, standard wines and spirits, as well as cocktails, will be available to you at no charge during bar service hours and dinner. Specialty alcohol, such as champagne, costs extra. Due to safety reasons and off-ship excursion activity, our on-board bar service hours are typically limited to pre-dinner and evenings. Soft drinks, juices, and water are also available at no cost.

PERSONAL ALCOHOL POLICY

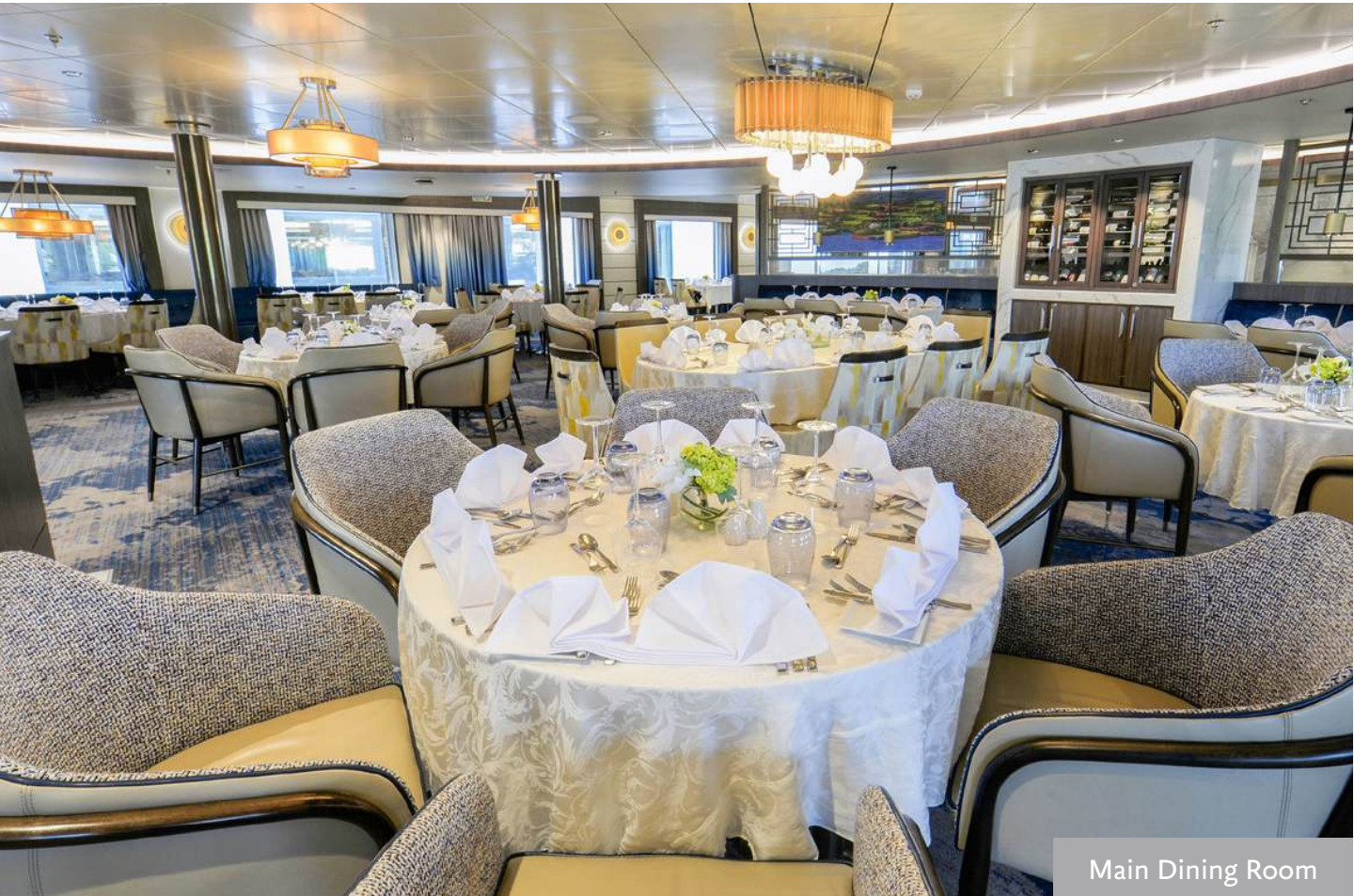
Consuming personal alcohol is prohibited anywhere on the ship.



Latitude Bar



Observation Bistro



Main Dining Room

Life At Sea

During days at sea, you'll enjoy lectures and workshops presented by our Expedition Team and spend time on deck looking for seabirds and cetaceans. Other days are packed full with multiple landings, Zodiac cruises and activities. Exhausting or relaxing, smiles abound as do great meals from your onboard chefs!

We have a number of policies and procedures that help make sure things run smoothly on the *Ocean Explorer*, so take a look below to help get the most out of your time aboard.

SCHEDULE CHANGES

While a daily program will be posted, sometimes new opportunities present themselves on short notice - so expect the unexpected and enjoy knowing that staff members are always here to make sure your expedition is as memorable and enjoyable as possible!

SAFETY ON BOARD AND ASHORE

Your safety and security are a top priority for our Expedition Team and crew members. Knowing how to safely move about your ship, act ashore and handle both wet and dry landings will help ensure you have a hassle-free expedition. Please take time to read the instructions in this important safety section.

SAFETY WHILE ON DECK

Be careful while walking around the outer decks, as footing can be slippery. Always use the handrails and wear proper closed-toe, nonslip footwear. Slip-on sandals, slippers or flip flops are neither safe nor suitable for wearing on board.

STAIRS AND DOORS

There are high steps in many doorways that lead to the outer decks, please watch your step and proceed with caution. When passing through doorways or walking in your room, do not place your hands around the edges of doors. Be aware that if doors are not closed or latched open properly, they present a danger and can open or close violently and unexpectedly as the ship moves across the sea.

SAFETY BRIEFING AND LIFEBOAT DRILL

By international maritime law, you must participate in an emergency drill prior to leaving port. Upon embarkation, you will have a safety briefing to outline appropriate behavior on board, and emergency procedures. Afterward, a drill will be conducted to familiarize you with your lifeboat, life vest and emergency evacuation route. This mandatory drill will be scheduled as soon as possible by the Expedition Leader. You will be provided with full details after you embark.

CONDUCT ASHORE

- For safety reasons, never walk alone while ashore. Always travel with someone else, or as part of a group.
- If weather conditions deteriorate the Captain will sound the return to ship signal. If you hear this, immediately return to the landing area or follow instructions from staff members.

For further information on onboard safety, please refer to our safety card [here](#), or review the copy in your cabin.





The Leader in Polar Adventures



QuarkExpeditions.com